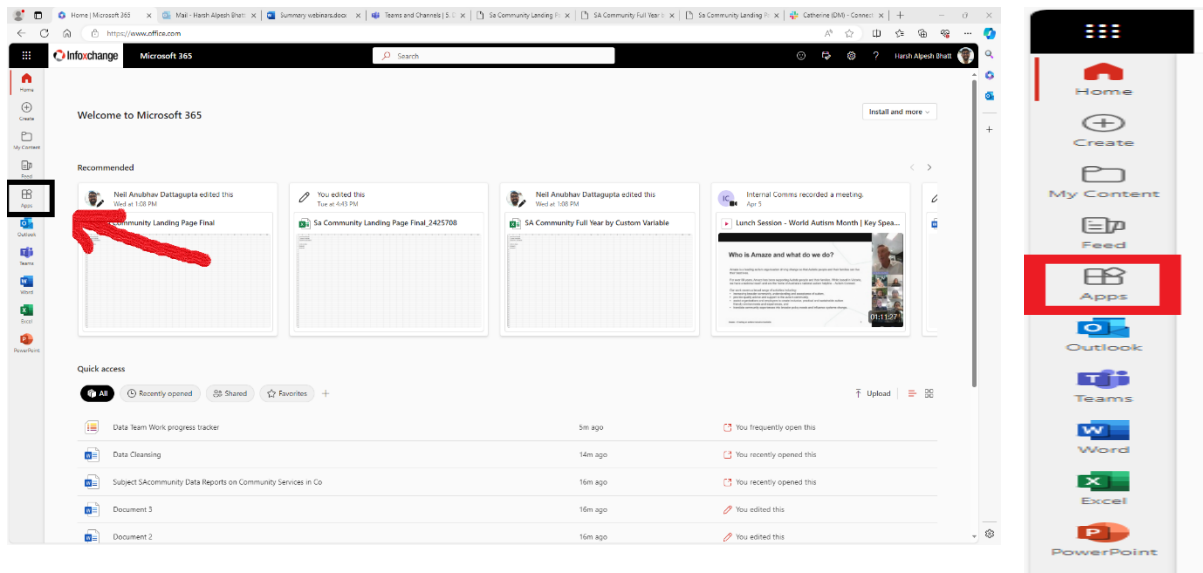


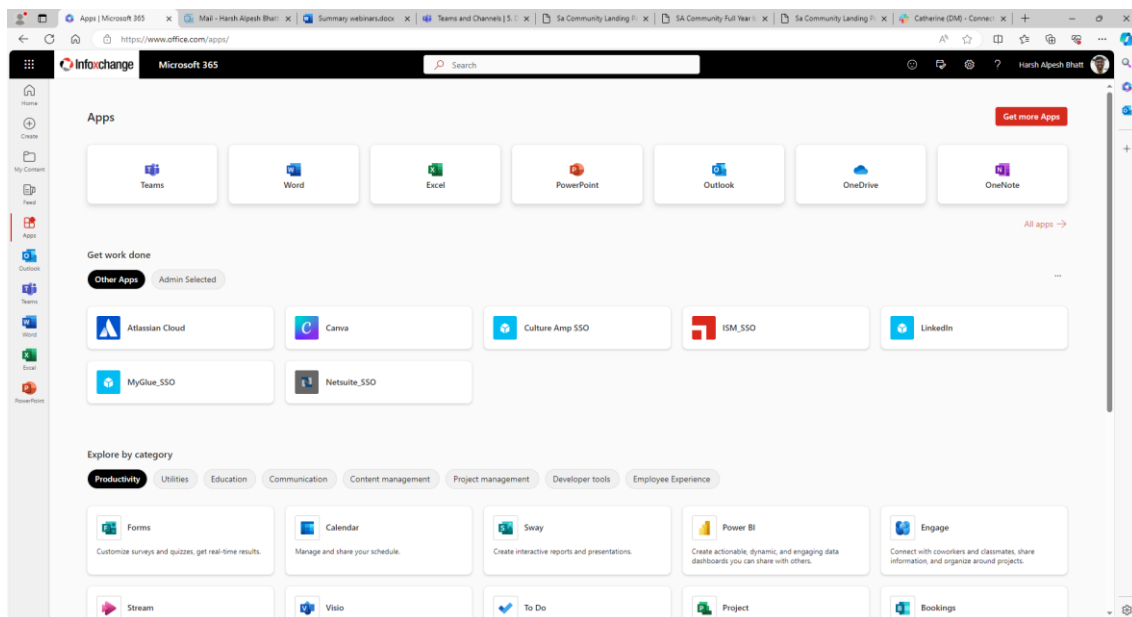
Benefits of the Microsoft PRO Account and Microsoft Learn – Harsh Alpesh Bhatt

In this document you will learn about all the different benefits that you will get because you have got your Microsoft pro license.

The first step is to sign into Microsoft Office 365 and once you are there you will be on the home page. This page will show you all the things that you have either looked at or are either working on. Once you are there your next step is to go to the apps section marked here.

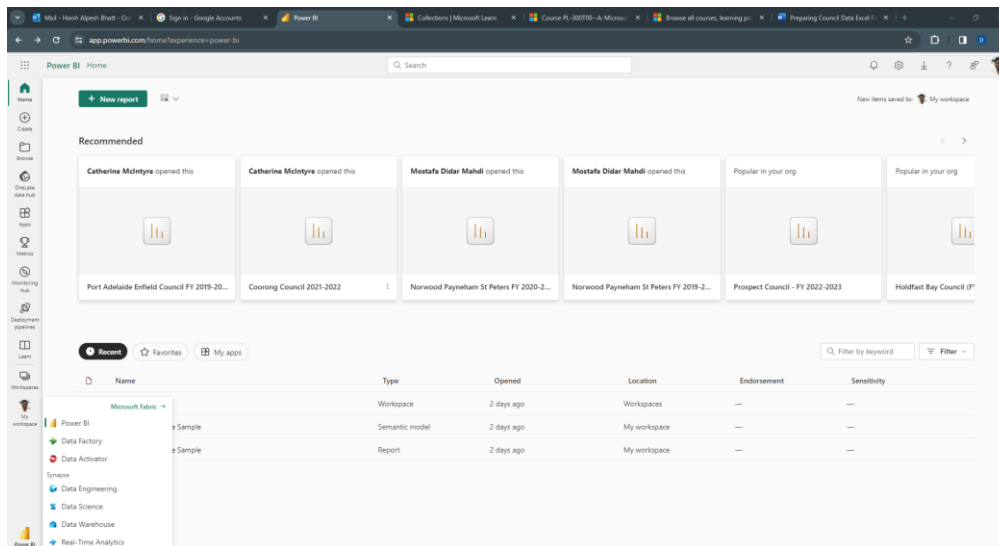


Here you can find all the different Microsoft apps that you can access with the Microsoft Pro Account. You can find your usual day to day applications like Teams, Outlook, Note, excel, PowerPoint, OneDrive. If you scroll down you can also find some applications that you might not use on a day to day basis but will help you get your work done quicker.

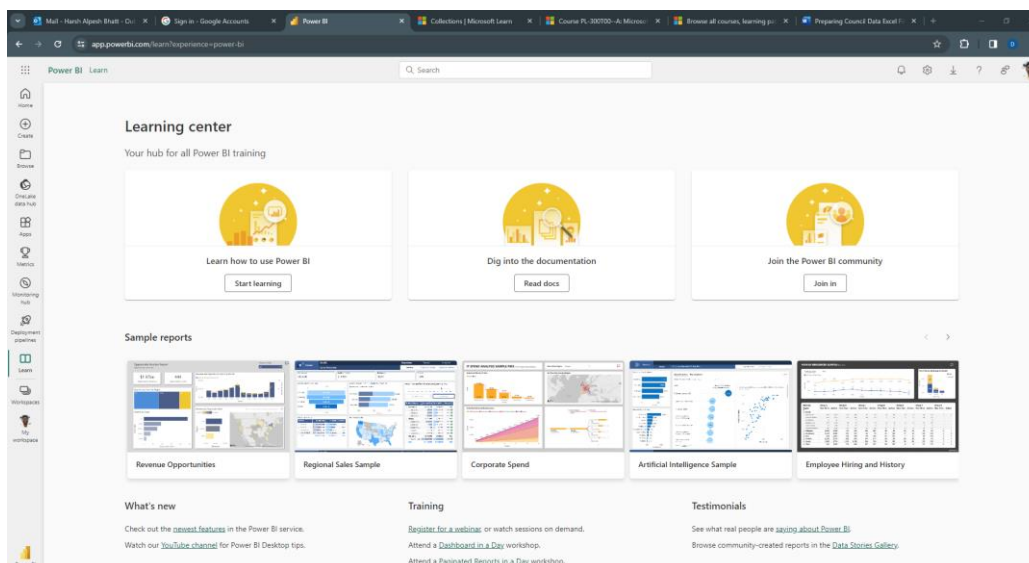


Data Analytics Team:

In this page you will see the option of Power BI. You open it. Once you have opened that you will be on the home page of the Power BI. Here you can see all the reports that are shared to you and also you will see the current reports that you are working on. On the bottom left you see power Bi logo, if you click on it, you will find the different Analytics platforms that are supported by Microsoft fabric. Here you will have Power BI, Data factory, Data Activator, Synapse Data Engineering, Synapse Data Science, Synapse Data Warehouse, and Synapse Real Time Analytics.



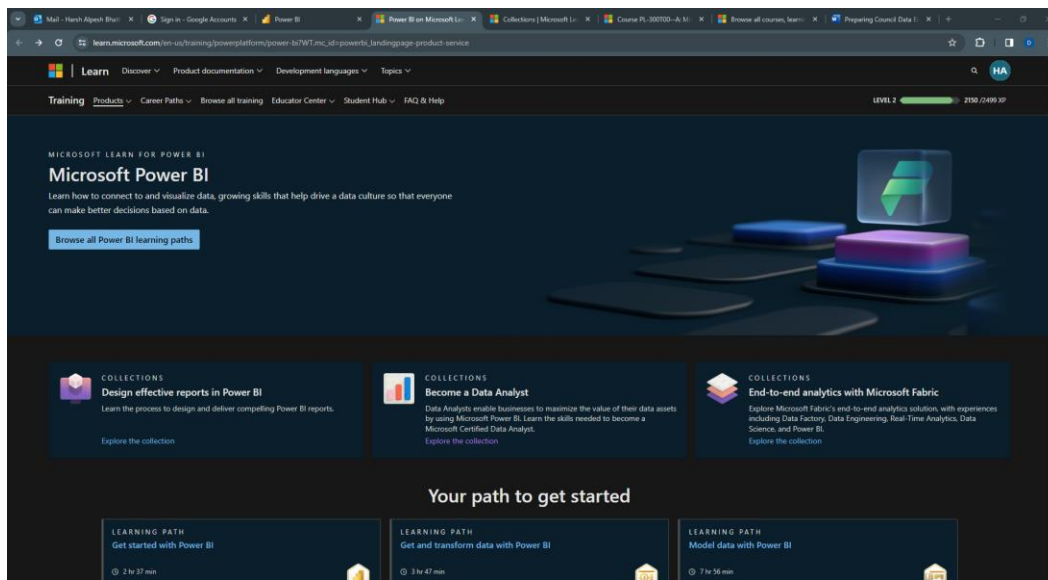
We will go through them later, for now we will stick with PowerBI and go to the Learn Section. Here you will have a learning center. You can look at the sample reports and explore how other analysts go on with their work and you will also see a section stating Learn how to use Power BI. This will take you to the Microsoft Learn Page.



Microsoft Learn:

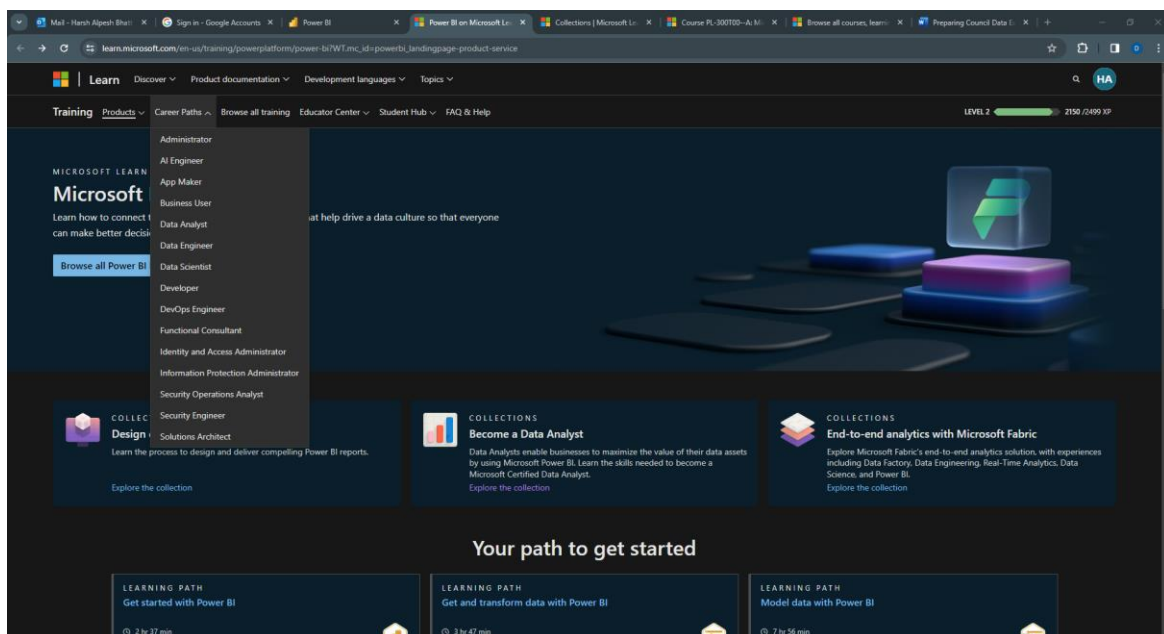
Microsoft Learn is a library of technical documentation and training for end users, developers, and IT professionals who work with Microsoft products. It is a free, hands-on training, resource where you can also get a Microsoft Certification once you clear its exams.

Once you are in through the Power BI Learn process, you will land onto the Microsoft Learn for Power Bi. Here you can see the different collections, modules, learning path that will help you with the not only Power BI but also with improving your skill as a Data Analyst.



But this isn't the only thing that you can learn. If you look at the top and see the Career Paths in the Training Section you will see that you there are lots of different career paths you can choose and learn skills.

Choose onto any one you want. Let's choose Data Analyst.

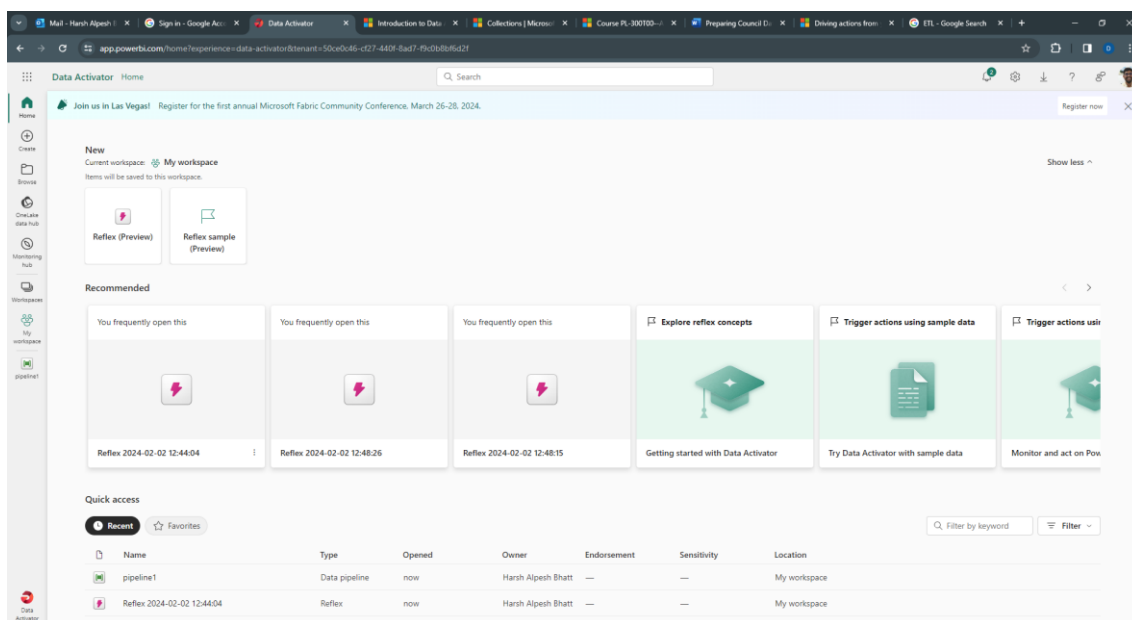


Data Activator:

Data Activator allows customers to build a digital nervous system that acts across all their data, at scale and in a timely manner. Business users can describe business conditions in a no-code experience to launch actions such as Email, Teams notifications, Power Automate flows and call into third party action systems. Business users can self-serve their needs and reduce their reliance on internal IT and/or developer teams, either of which is often costly and hinders agility. Customer organizations don't need a developer team to manage and maintain custom in-house monitoring or alerting solutions.

Some common use cases are:

- Run ads when same-store sales decline.
- Alert store managers to move food from failing grocery store freezers before it spoils.
- Retain customers who had a bad experience by tracking their journey through apps, websites etc.
- Help logistics companies find lost shipments proactively by starting an investigation workflow when package status isn't updated for a certain length of time.
- Alert account teams when customers fall into arrears, with customized time or value limits per customer.
- Track data pipeline quality, either rerunning jobs or alerting when pipelines fail or anomalies are detected.



Microsoft Synapse:

Microsoft Fabric: Microsoft Fabric is an all-in-one analytics solution for enterprises that covers everything from data movement to data science, Real-Time Analytics, and business intelligence. It offers a comprehensive suite of services, including Data Lake, data engineering, and data integration, all in one place.

Azure Synapse Analytics is an enterprise analytics service that accelerates time to insight across data warehouses and big data systems. It brings together the best of SQL technologies used in enterprise data warehousing, Apache Spark technologies for big data, and Azure Data Explorer for log and time series analytics.

Synapse Data Engineering: We can create a lakehouse and use Apache Spark to transform and prepare organizational data to share with the business.

Synapse Data Science: It helps you to explore your data, build machine learning models to infuse predictive insights into your analytics solutions and applications.

Synapse Data Warehouse: It helps you to scale up your insights by storing and analysing data in a secure, open data format SQL warehouse with top performance at PB scale.

Synapse Real Time Analytics: This will help you to rapidly ingest, transform and query any data source and format from 1GB to 1 PB, and then visualise and share the insights.

